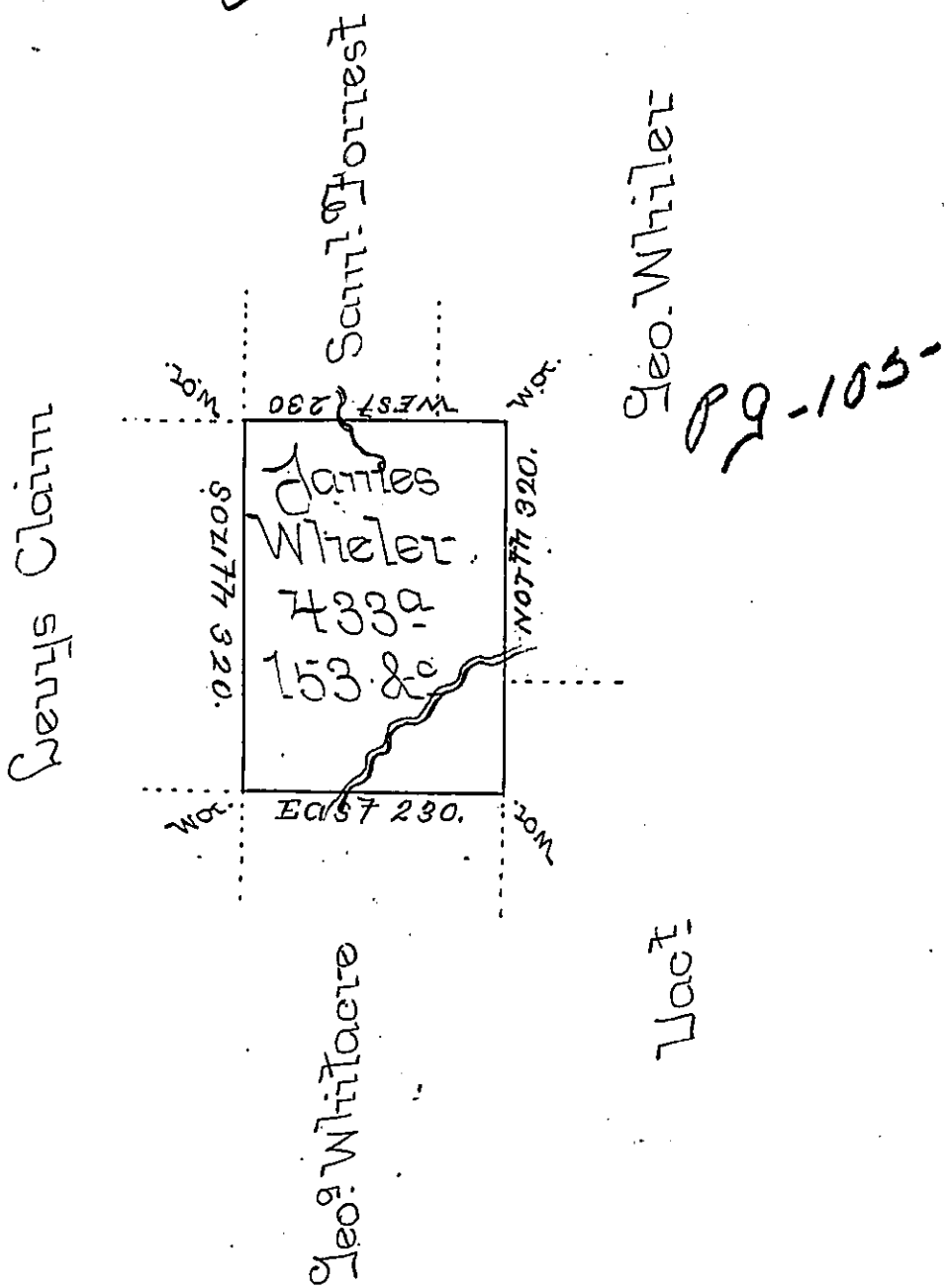


C 66-187



Situate in Mifflin County upper Bald Eagle Township on the waters of Beech creek, Containing four hundred thirty three acres, one hundred & thirty three perches & the allowance of six P Cent. &c. Surveyed 12th July 1792 in pursuance of a Warrant dated 30th July 1792

Jo. J. Wallis D.S.

To Danl. Brodhead Esq: }
Surveyor General - }

IN TESTIMONY that the above is a copy of the original remaining on file in the Department of Internal Affairs of Pennsylvania, made conformably to an Act of Assembly approved the 16th day of February, 1833, I have hereunto set my Hand and caused the Seal of said Department to be affixed at Harrisburg, this fourth day of October 1898.

James W. Latta
Secretary of Internal Affairs.